

MAINTENANCE INSTRUCTION

●Feeding Path Cleaning Wire

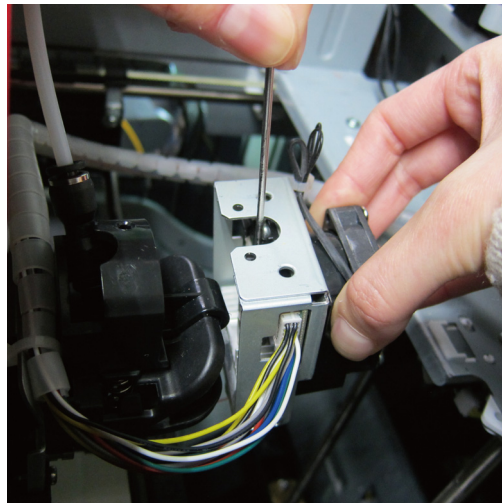
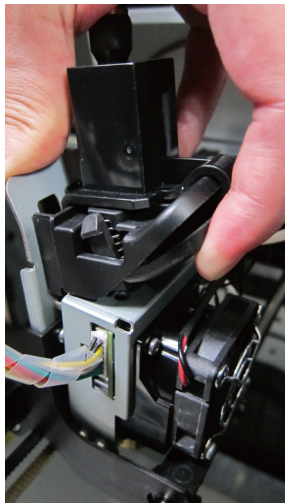


Clean Nozzle with Feeding Path Cleaning Wire

In order to prevent print quality from impact due to residual and accumulated filament, which results in poor discharge, after long-term use of print nozzle, it is recommended to enable the "CLEAN NOZZLE" (nozzle cleaning) function of the printer every 25 hours of print to clear residuals with nozzle cleaning wire or feeding path cleaning wire.

If the cleaning cycle does not unclog the extruder, try cleaning the feeding path by using the feeding path cleaning wire.

1. Select "CLEAN NOZZLE" on the printer.
2. Release the extruder module (don't remove the heating cable at the side).
3. Insert the thick cleaning wire into the feeding path all the way down and "floss" the inside of the nozzle to push the residue out.
4. After cleaning the feeding path, install the extruder to the bracket.



- * Filament should be unloaded from the extruder before cleaning the feeding path.
- * Care should be taken during the operation to avoid potential burn injuries.

MAINTENANCE INSTRUCTION

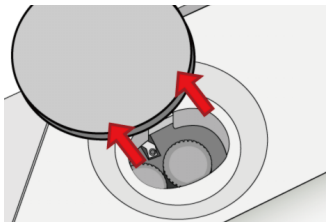
- Cleaning Brush



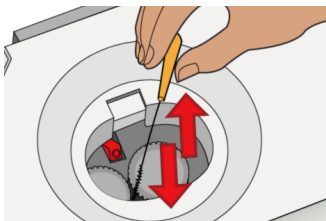
Clean Auto-Feed System with cleaning brush

In order to prevent print quality from impact due to residual and accumulated filament, which results in poor discharge, after long-term use of auto-feed system, it is recommended to enable the " UNLOAD FILAMENT " (Start to Clean Auto Feed System) function of the printer every 25 hours of print to clear auto feed system with cleaning brush.

1. Select "UNLOAD FILAMENT" on the printer. Gear wheels rotating.
2. Open the top cover and put out filament. Remove the small black above the auto-feed system.



3. Using clean brush back and forth to clean motor gear, please make sure the motor gear running when clean.



4. Replace the top cover on the printer after the cleaning is completed.

